

## Husqvarna TR650 Terra - Wiring Diagrams

### Wiring Diagram List

Wiring Diagram List	
01	H61-12-01 Lighting / Horn / Instrument Panel
02	H61-12-02 Positive Distribution / Ground Distribution / Fuses
03	H61-12-03 Starter Motor / Alternator
04	H61-12-04 Digital Engine Electronics
05	H61-12-05 Antilock Braking System (ABS)
06	H61-12-06 Socket / Diagnostic Connector / Plug Connection for Optional Accessories (SZ)
07	H61-12-07 Supply, Control Units
08	H61-12-08 Alarm System (DWA)
09	H61-12-09 Heated Grips

### Cable colour abbreviations:

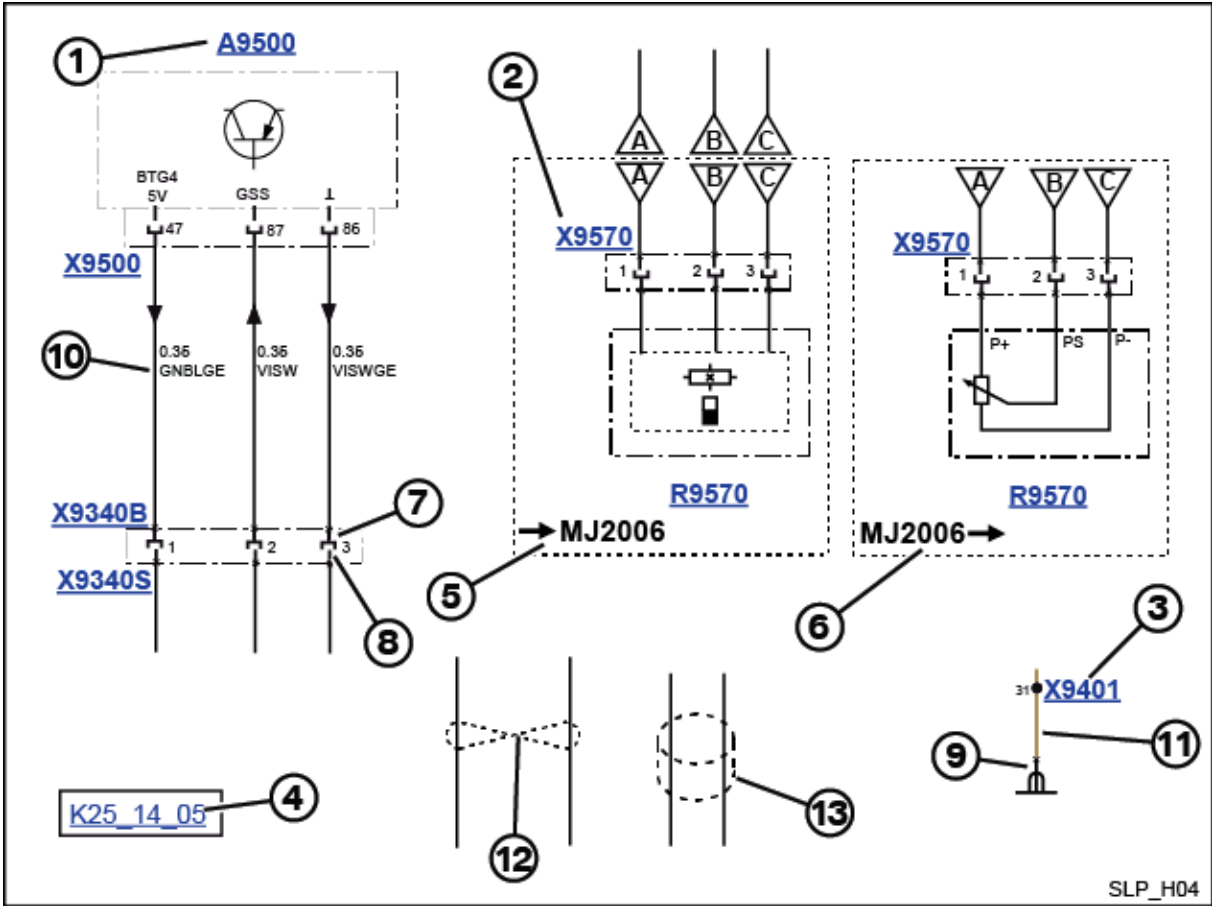
BL = blue BR = brown	GE = yellow GN = green	GR = grey OR = orange	RT = red RS = pink	SW = black TR = transparent	VI = violet WS = white
-------------------------	---------------------------	--------------------------	-----------------------	--------------------------------	---------------------------

## Legend

<p><b>A</b></p> <p>A9001 Control unit, instrument panel</p> <p>A9190 Control unit for antilock braking system (ABS)</p> <p>A9260 Rectifier</p> <p>A9500 Digital Engine Electronics (DME) control unit</p> <p>A9700 Control unit for alarm system (DWA)</p> <p><b>B</b></p> <p>B9193 Wheel speed sensor, front</p> <p>B9194 Wheel speed sensor, rear</p> <p>B9210</p> <p>B9220 Fuel level sensor</p> <p>B9326 Crankshaft sensor</p> <p>B9550 Intake air temperature sensor</p> <p>B9562 Coolant temperature sensor</p> <p>B9690 Oxygen sensor</p> <p><b>E</b></p> <p>E9010 Headlights</p> <p>E9011 Low-beam headlight</p> <p>E9012 High-beam headlight</p> <p>E9013 Tail light</p> <p>E9015 Side light</p> <p>E9016 Number-plate light</p> <p><b>F</b></p> <p>F9200 Fuse carrier 1</p>	<p><b>G</b></p> <p>G9230 Battery</p> <p>G9240 Alternator</p> <p><b>H</b></p> <p>H9030 Front left turn indicator</p> <p>H9035 Rear left turn indicator</p> <p>H9040 Front right turn indicator</p> <p>H9045 Rear right turn indicator</p> <p>H9050 Brake light</p> <p>H9150 Horn</p> <p>H9340 Rear light</p> <p><b>K</b></p> <p>K5* Relay, heated grip, stage 1</p> <p>K6* Relay, heated grip, stage 2</p> <p>K9019 Main relay</p> <p>K9100 Fuel pump relay</p> <p>K9130 Starter relay</p> <p>K9137 Fan relay</p> <p><b>L</b></p> <p>L9553 Ring aerial</p> <p><b>M</b></p> <p>M9100 Electric fuel pump</p> <p>M9130 Starter motor</p> <p>M9141 Fan</p> <p>M9552 Idle actuator</p>	<p><b>R</b></p> <p>R3 Resistor, gear position switch</p> <p>R4 Resistor, fuel level sensor</p> <p>R9570 Throttle valve sensor</p> <p>R9931 Heated grip, left</p> <p>R9932 Heated grip, right</p> <p><b>S</b></p> <p>S9043 Turn signal switch</p> <p>S9051 Brake light switch, handbrake fitting</p> <p>S9052 Brake light switch, foot brake lever</p> <p>S9060 Ignition lock</p> <p>S9070 Multifunction switch, left</p> <p>S9071 High beam switch</p> <p>S9072 Horn switch</p> <p>S9074 Headlight flasher</p> <p>S9080 Right instrument panel switch</p> <p>S9083</p> <p>S9084</p> <p>S9091 Clutch switch</p> <p>S9092 Gear position switch</p> <p>S9093 Side-stand switch</p> <p>S9930 Heated grip switch</p> <p><b>T</b></p> <p>T9510 Ignition coil 1</p> <p>T9520 Ignition coil 2</p> <p><b>V</b></p>
---	--	---

<p>X</p> <p>X3 Terminating resistor</p> <p>X76 Relay base, fuel pump relay</p> <p>X78 Plug connection, resistor, gear position switch</p> <p>X79 Plug connection, fuel level sensor resistor</p> <p>X97B Relay base, heated grip, stage 1</p> <p>X98B Relay base, heated grip, stage 2</p> <p>X9001 Plug connection, instrument panel control unit</p> <p>X9010 Plug connection for headlight</p> <p>X9018 Plug connection for side lights</p> <p>X9019 Relay base, main relay</p> <p>X9023 Plug connection, number plate light</p> <p>X9030B Plug connection for front left turn indicator</p> <p>X9030S Plug connection for front left turn indicator</p> <p>X9031 Plug connection for front left turn indicator -</p> <p>X9032 Plug connection for front left turn indicator +</p> <p>X9035B Plug connection, rear left turn indicator</p> <p>X9035S Plug connection, rear left turn indicator</p> <p>X9036 Plug connection, rear left turn indicator -</p> <p>X9037 Plug connection, rear left turn indicator +</p> <p>X9040B Plug connection, front right turn indicator</p> <p>X9040S Plug connection, front right turn indicator</p> <p>X9041 Plug connection, front right turn indicator -</p> <p>X9042 Plug connection, front right turn signal indicator +</p> <p>X9045B Plug connection, rear right turn indicator</p> <p>X9045S Plug connection, rear right turn indicator</p> <p>X9046 Plug connection, rear right turn indicator -</p> <p>X9047 Plug connection, rear right turn indicator +</p>	<p>X9051 Plug connection, brake light switch, handbrake fitting</p> <p>X9052 Plug connection, brake light switch, foot brake lever</p> <p>X9060 Plug connection, ignition lock</p> <p>X9070 Plug connection, multifunction switch, left</p> <p>X9080 Plug connection, combination switch, right</p> <p>X9091 Plug connection, clutch switch</p> <p>X9092 Plug connection for gear lever position switch</p> <p>X9093 Plug connection, side-stand switch</p> <p>X9100 Plug connection, electric fuel pump</p> <p>X9130 Plug connection, starter relay</p> <p>X9131 Plug connection, starter</p> <p>X9133 Plug connection, starter relay, terminal 30</p> <p>X9134 Plug connection, starter relay, terminal 45</p> <p>X9137 Relay base, fan relay</p> <p>X9141 Plug connection for fan</p> <p>X9157 Plug connection, horn</p> <p>X9190 Plug connection, ABS control unit</p> <p>X9193 Plug connection for front wheel speed sensor</p> <p>X9194 Plug connection, rear wheel speed sensor</p> <p>X9200 Plug connection, fuse carrier 1</p> <p>X9210</p> <p>X9230 Battery positive</p> <p>X9231 Battery, ground</p> <p>X9238 Ground</p> <p>X9240 Plug connection, alternator ~</p> <p>X9260 Plug connection, rectifier</p> <p>X9326 Plug connection, crankshaft sensor</p>
--	--

<p> X9341 Plug connection, rear light  X9349B Plug connection for optional accessories (SZ)  X9349S Plug connection for optional accessories (SZ)  X9372 Cable connector  X9380 Cable connector  X9381 Cable connector  X9382 Cable connector  X9401 Cable connector  X9402 Cable connector  X9403 Cable connector  X9408 Cable connector  X9412 Cable connector  X9430 Cable connector  X9432 Cable connector  X9440 Cable connector  X9441 Cable connector  X9450 Cable connector  X9452 Cable connector  X9468 Cable connector  X9475 Cable connector  X9478 Cable connector  X9488 Cable connector  X9500 Plug connection, DME control unit  X9506 Plug connection, ignition coil  X9507 Plug connection, secondary ignition coil  X9527 Cable connector  X9528 Plug connection 2 for right multifunction switch </p>	<p> X9550 Plug connection, intake air temperature sensor  X9552 Plug connection for idle actuator  X9553 Plug connection, ring aerial  X9562 Plug connection, coolant temperature sensor  X9570 Plug connection, throttle valve sensor  X9572 Plug connection, fuel tank vent valve  X9590 Diagnostic connector  X9597 Cable connector  X9601 Plug connection, fuel injector  X9641 Cable connector  X9642 Cable connector  X9690 Plug connection for exhaust gas oxygen sensor  X9700 Anti-theft alarm connector  X9761 Cable connector  X9762 Cable connector  X9929 Cable connector  X9931 Plug connection for left heated grip  X9932 Plug connection for right heated grip  X9951 Cable connector  X9956 Cable connector  X9970 Plug connection 2, combination switch, left </p> <p> Y  Y9572 Tank vent valve  Y9601 Injection valve 1  Y9602 Injection valve 2 </p>
---	---

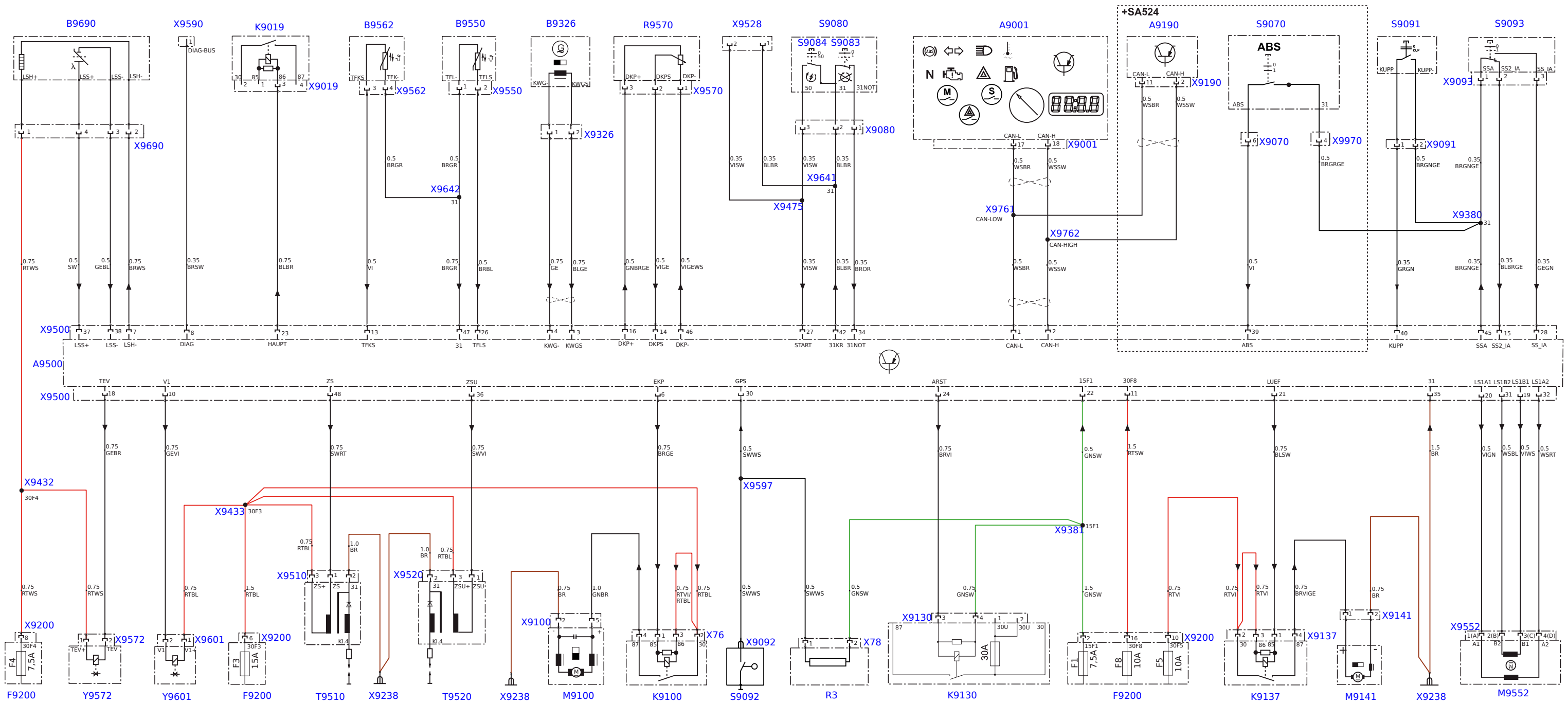
<p>1 - Component code for part</p> <p>Display of part designation  Hyperlink to further documentation  e.g. component images, installation positions</p>		
<p>2 - Component code for plug connection</p> <p>Display of plug connection designation  Hyperlink to further documentation  e.g. plug images, installation positions</p>		
<p>3 - Component code for cable connectors</p> <p>Display of cable connectors designation  Hyperlink to further documentation  e.g. overview of cable connectors</p>		
<p>4- Information on wiring diagram</p> <p>Display of wiring diagram designation  Hyperlink to further documentation  e.g. wiring diagram keys</p>		
<p>5 - Versions up to model year 2006</p>		
<p>6 - Versions as of model year 2006</p>		
<p>7 - Bushing contact plug connection</p>		
<p>8 - Pin contact plug connection</p>	<p>11 - Coloured lines</p> <p>Red = direct voltage supply terminal 30  Green = switched voltage supply terminal 15  Brown = ground</p>	<p>12 - Twisted line pair</p>
<p>9 - Screw connection e.g. ground</p>		<p>13 - Shielded line</p>
<p>10 - Wire information  Line cross-section in mm<sup>2</sup> and Wire colour</p>		

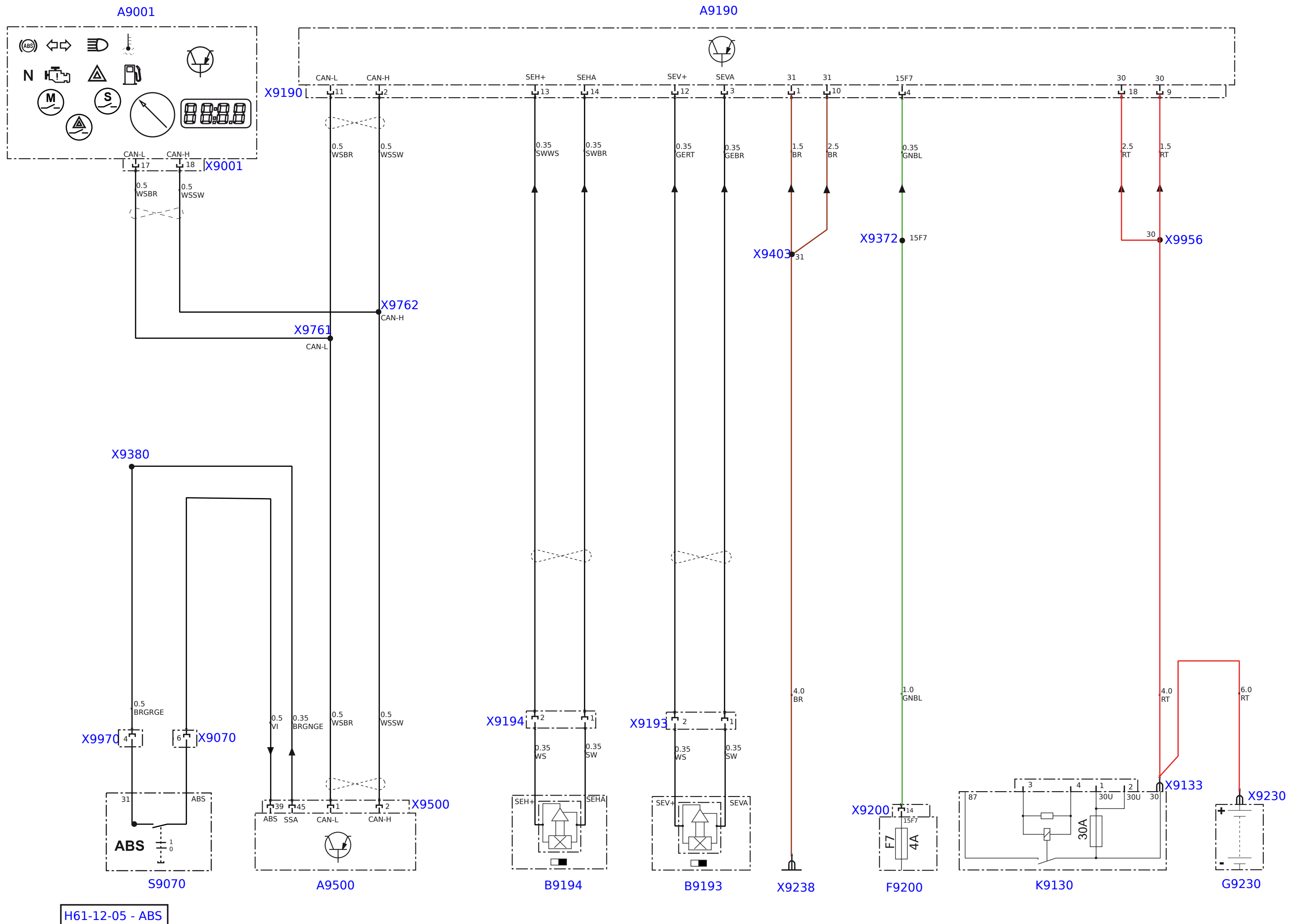








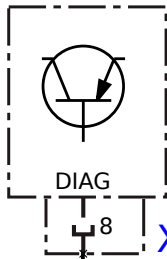




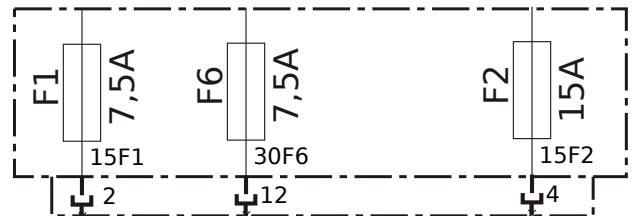
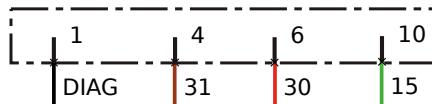
A9500

X9590

F9200



X9500



X9200

0.35  
BRSW

0.35  
BRSW

0.75  
BR

0.75  
RTGE

0.5  
GNSW

1.5  
GNSW

1.5  
RTGE

1.5  
GNWS

X9381

15F1

30F6

X9382

X9452

15F2

X9401

31

X9402

31

1.0  
BR

2.5  
BR

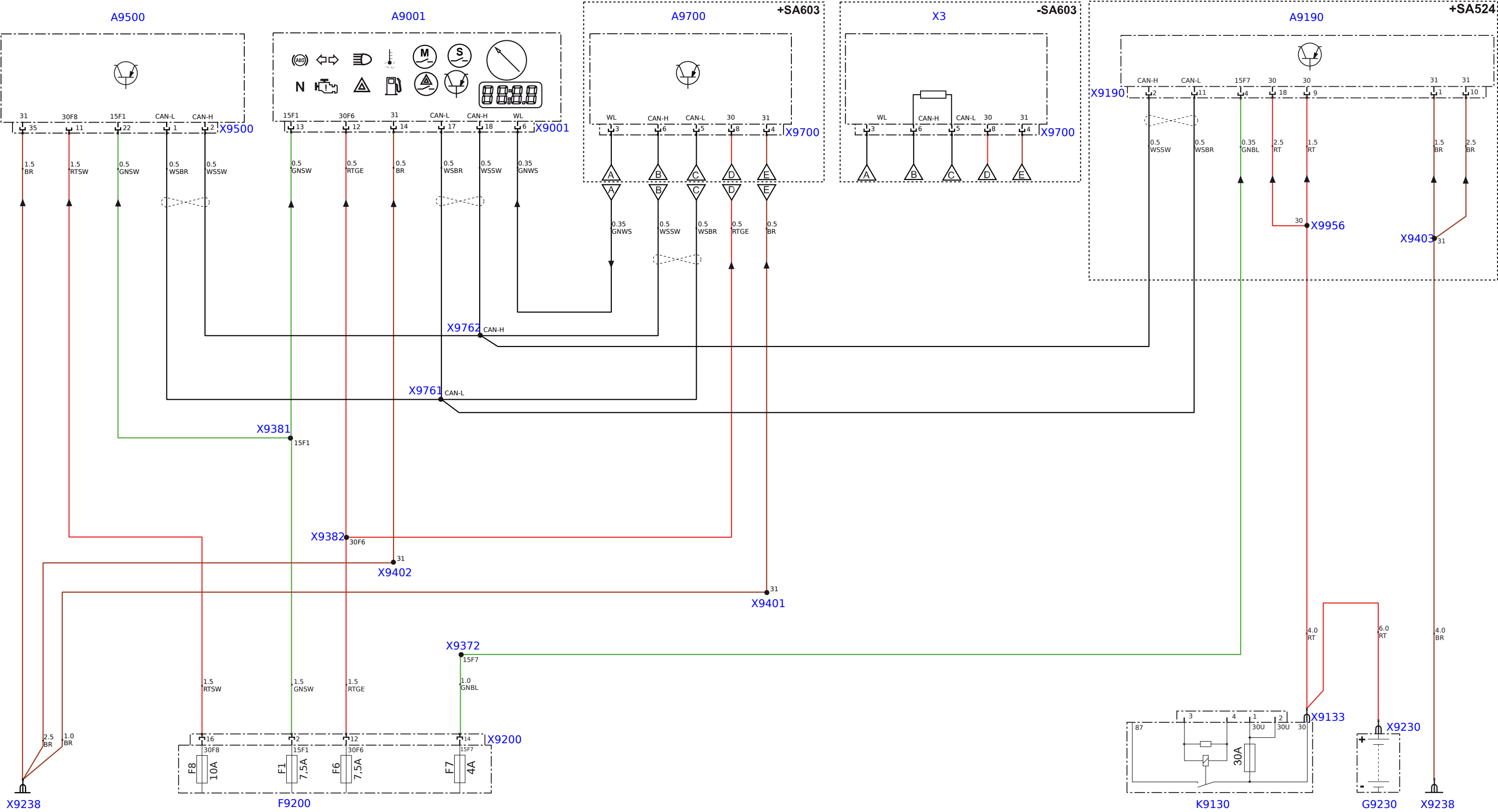
0.5  
BR

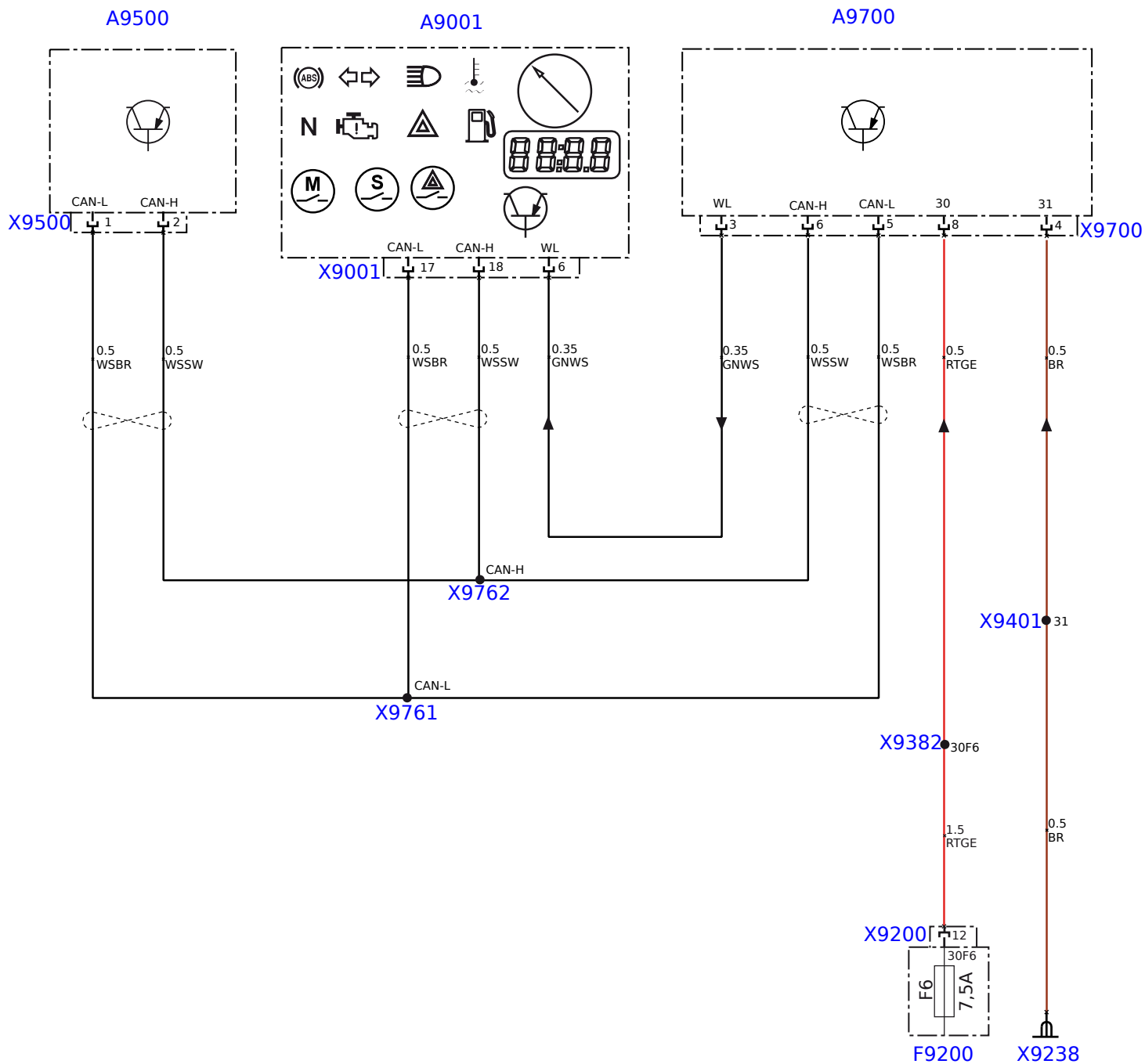
0.35  
GNWS

X9238

X9349B

H61-12-06 - Diagnostics & Accessory Sockets





H61-12-08 - Alarm System (DWA)

