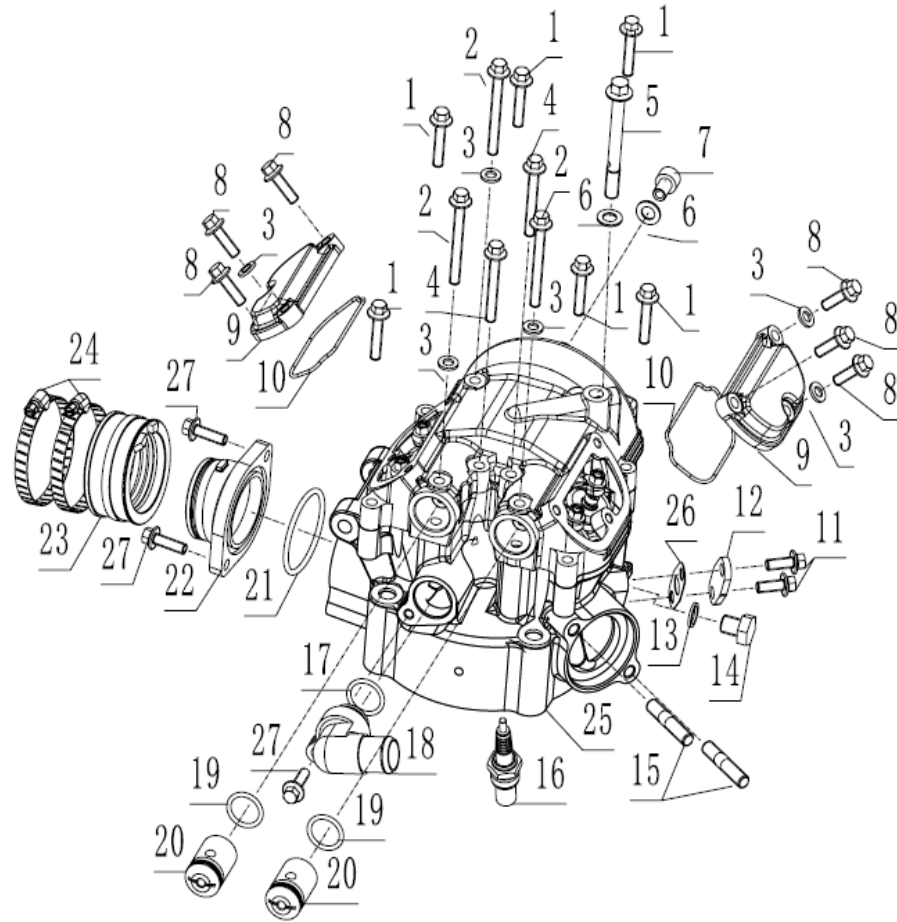


CYLINDER HEAD ASSY

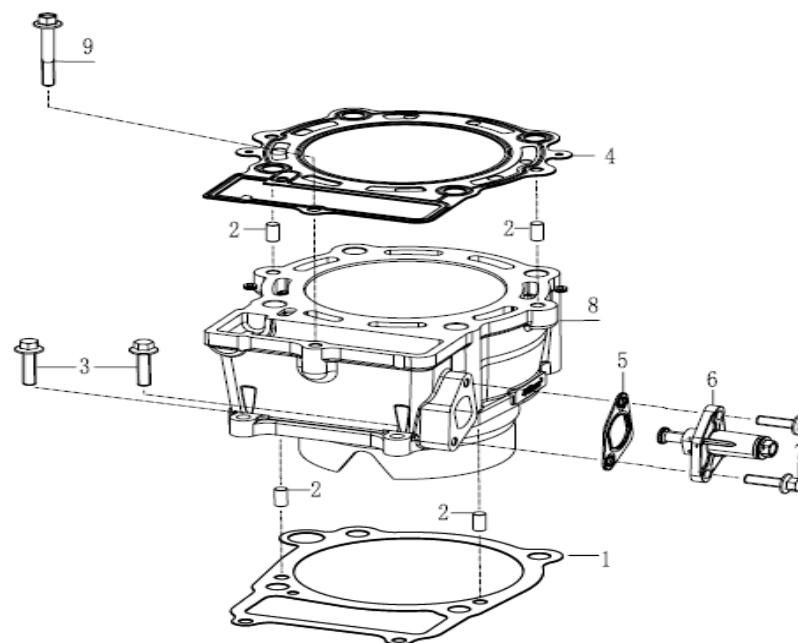
N°	PART CODE	DESCRIPTION	Qté
1	BHR450RM01 100033114-0002	Bolt, M6×30	6
2	BHR450RM01 100033121-0006	Bolt, M6×55	3
3	BHR450RM01 100106566	Washer, φ6.5×1.5×φ12	6
4	BHR450RM01 100033120-0001	Bolt, M6×45	2
5	BHR450RM01 100087793-0001	Bolt, M8×70	1
6	BHR450RM01 100106575	Washer, φ8.5×1.5×φ15	2
7	BHR450RM01 100032843-0004	Bolt, M8×12	1
8	BHR450RM01 100033108-0002	Bolt, M6×20	6
9	BHR450RM01 100102873-0001	Cover Valve Chamber	2
10	BHR450RM01 100104529	Ring	2
11	BHR450RM01 100055589-0006	Bolt, M6×16	2
12	BHR450RM01 100105429	Intake Cover Board	1
13	BHR450RM01 100106546	Washer, φ10.5×1.5×φ14	1
14	BHR450RM01 100204649-0001	Oil Drain Plug	1
15	BHR450RM01 100100439-0002	Bolt, M8×40	2
16	BHR450RM01 100081435	Spark Plug	1
17	BHR450RM01 100107697	O-Ring, φ19×2.4	1
18	BHR450RM01 100105671	Water Pipe Fitting	1
19	BHR450RM01 100107691	O-Ring, φ18×2.5	2
20	BHR450RM01 100105202	Shaft Sleeve Of Shaft Rocker Arm	2
21	BHR450RM01 100107782	O-Ring, φ45×3	1
22	BHR450RM01 100105356	Inlet Pipe	1
23	BHR450RM01 100105372	Connecting Pipe	1
24	BHR450RM01 100105385	Clamp Inlet Pipe	2
25	BHR450RM01 100104467-0001	Cylinder Head Assy	1
26	BHR450RM01 100104640	Paper Gasket	1
27	BHR450RM01 100055588-0006	Bolt, M6×20	3



CYLINDER HEAD ASSY

CYLINDER ASSEMBLY

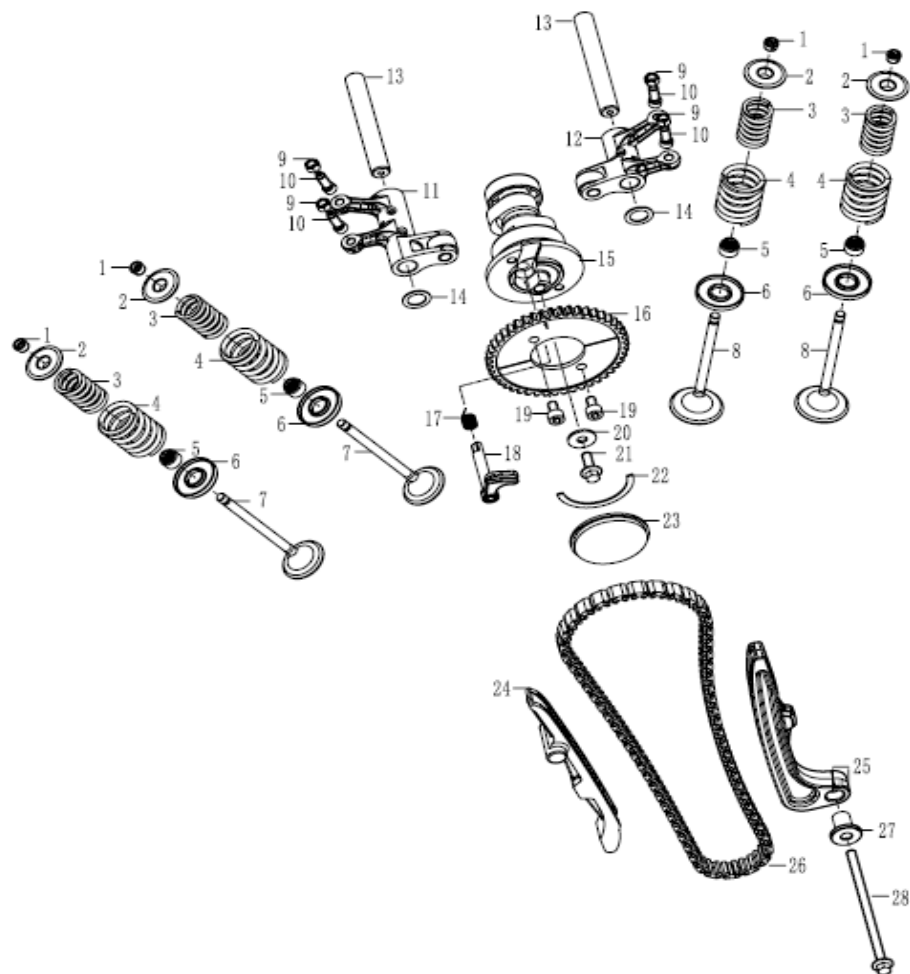
N°	PART CODE	DESCRIPTION	Qté
1	BHR450RM01 100078732	Gasket Cylinder Block	1
2	BHR450RM01 100108526	Pin, $\phi 6 \times 12$	4
3	BHR450RM01 100033110-0002	Bolt, M6 \times 25	2
4	BHR450RM01 100104636	Gasket Assy Cylinder Head	1
5	BHR450RM01 100108520	Gasket Tensioner	1
6	BHR450RM01 100105242-0002	Chain Tensioning Wheel	1
7	BHR450RM01 100055588-0006	Bolt, M6 \times 20	2
8	BHR450RM01 100104404-0001	Cylinder Block Assembly	1
9	BHR450RM01 100033120-0001	Bolt, M6 \times 45	1



CYLINDER ASSEMBLY

VALVE MECHANISM

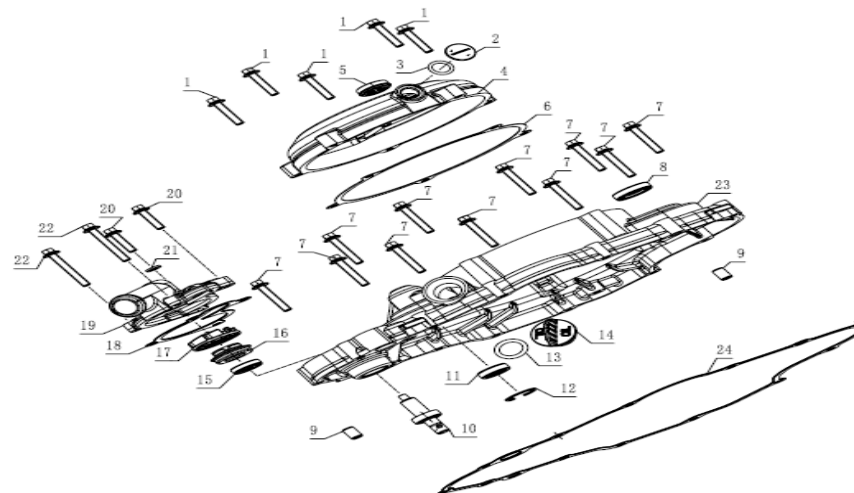
N°	PART CODE	DESCRIPTION	Qté
1	BHR450RM01 100105323	Valve Locker	8
2	BHR450RM01 100083714	SpRing,Seat	4
3	BHR450RM01 100073909	Valve Inner Spring	4
4	BHR450RM01 100054065	Valve Outer Spring	4
5	BHR450RM01 100105339	Seal Valve Stem	4
6	BHR450RM01 100083713	Outer Valve SpRing,Retainer	4
7	BHR450RM01 100105285	Exhaust Valve	2
8	BHR450RM01 100105274	Intake Valve	2
9	BHR450RM01 100105155	Nut Valve Clearance	4
10	BHR450RM01 100105166	Screw,Valve Clearance	4
11	BHR450RM01 100105188	Rocker Arm Assembly Valve	1
12	BHR450RM01 100105187	Rocker Arm Assembly Valve	1
13	BHR450RM01 100105154	Rocker Shaft	2
14	BHR450RM01 100106396	Washer,φ12.1×1×φ18	2
15	BHR450RM01 100104969	Gamp Shaft Comp	1
16	BHR450RM01 100069691	Timing Driven Sprocket	1
17	BHR450RM01 100061588	Decompression SpRing,Of Camshaft	1
18	BHR450RM01 100059478	Centrifugal Mass Ass	1
19	BHR450RM01 100010835-0001	Bolt, M6×10	2
20	BHR450RM01 100106379	Washer,φ6.5×1.5×φ18	2
21	BHR450RM01 100055589-0006	Bolt, M6×16	1
22	BHR450RM01 100059951	Stop Plate Camshaft	1
23	BHR450RM01 100102895	Seal Colloid Of Cylinder Head	1
24	BHR450RM01 100105229	Guide Plate Chain	1
25	BHR450RM01 100105216	Tension Plate Assy	1
26	BHR450RM01 100070093	Sproket Chain	1
27	BHR450RM01 100105211	Bush	1
28	BHR450RM01 100033090-0004	Bolt, M6×105	1



VALVE MECHANISM

RIGHT CRANKCASE COVER

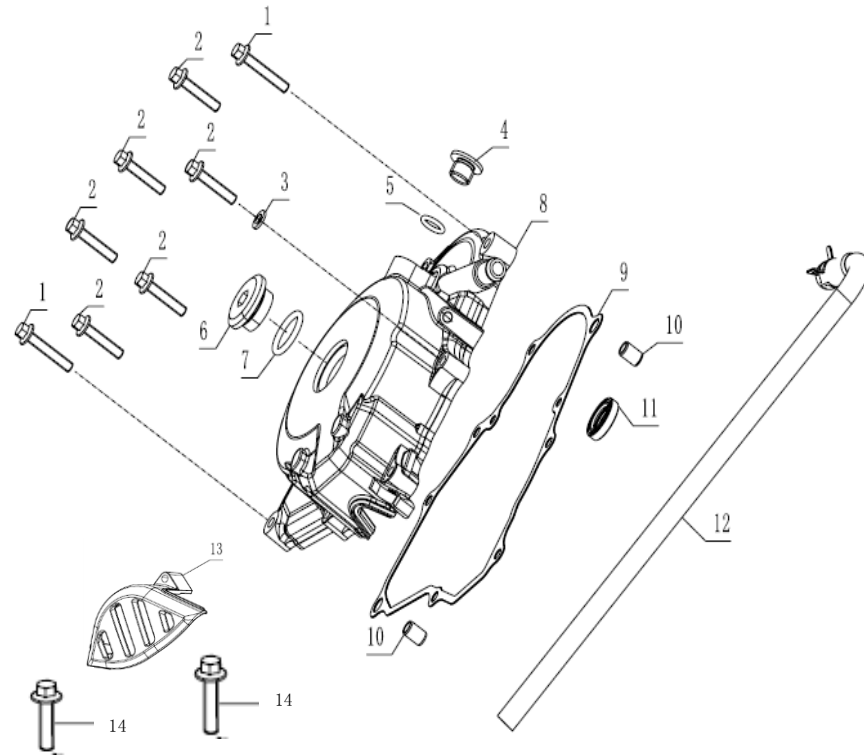
N°	PART CODE	DESCRIPTION	Qté
1	BHR450RM01 100011536-0002	Bolt, M6×30	5
2	BHR450RM01 100103059-0003	Cap Small View Hole	1
3	BHR450RM01 100010118	O-Ring,φ13.2×2.65	1
4	BHR450RM01 100101318-0003	Decorate Cover R.Crankcase Cover	1
5	BHR450RM01 100101321	Oil Lelve Sight Window	1
6	BHR450RM01 100104615	Gasket Decotate Cover	1
7	BHR450RM01 100011537-0002	Bolt, M6×35	11
8	BHR450RM01 100104744	Oil Seal 18×30×7	1
9	BHR450RM01 100102726	Dowel Pin,φ9×13	2
10	BHR450RM01 100069942	Shaft Water Pump Ass.	1
11	BHR450RM01 100104688	Oil Seal 14×24×7	1
12	BHR450RM01 100011077	Retaining Ring, 24	1
13	BHR450RM01 100107693	O-Ring,φ18×3.55	1
14	BHR450RM01 100104938	Oil Plug Assy	1
15	BHR450RM01 100104809	Oil Seal 12×24×6	1
16	BHR450RM01 100105543	Water Pump Seal	1
17	BHR450RM01 100066800	Ane Wheel Water Pump	1
18	BHR450RM01 100069962	Gasket	1
19	BHR450RM01 100067393-0002	Water Pump Cover	1
20	BHR450RM01 100011534-0002	Bolt, M6×25	2
21	BHR450RM01 100106566	Washer,φ6.5×1.5×φ12	1
22	BHR450RM01 100011539-0001	Bolt, M6×45	2
23	BHR450RM01 100101309-0003	Cover Comp Right Crankcase	1
24	BHR450RM01 100104577	Gasket R.Crankcase Cover	1



RIGHT CRANKCASE COVER

LEFT CRANKCASE COVER

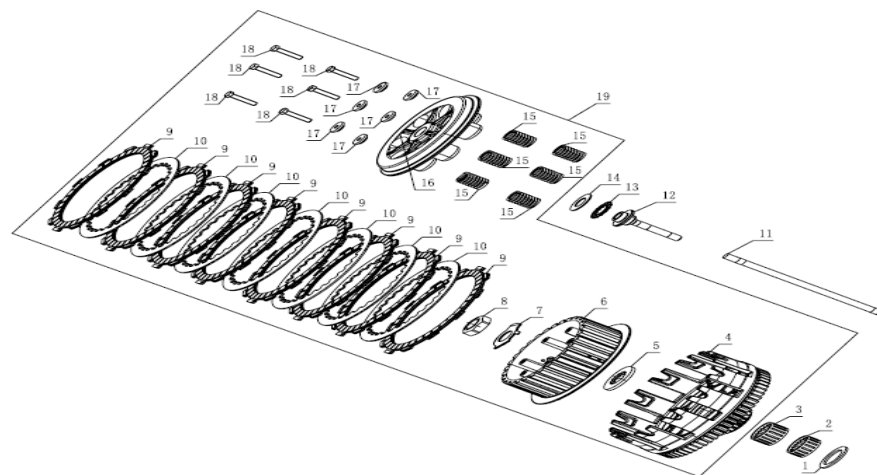
N°	PART CODE	DESCRIPTION	Qté
1	BHR450RM01 100011537-0002	Bolt, M6×35	2
2	BHR450RM01 100011536-0002	Bolt, M6×30	6
3	BHR450RM01 100106566	Washer, $\phi 6.5 \times 1.5 \times \phi 12$	1
4	BHR450RM01 100105195	Bolt	1
5	BHR450RM01 100107654	O-Ring, $\phi 11.8 \times 2.6$	1
6	BHR450RM01 100103063-0002	Cap Big View Hole	1
7	BHR450RM01 100107715	O-Ring, $\phi 22.5 \times 3.55$	1
8	BHR450RM01 100102799-0003	Front Part, L.Crankcase Cover	1
9	BHR450RM01 100104579	Gasket Cylinder Head Upper Cover	1
10	BHR450RM01 100102726	Dowel Pin, $\phi 9 \times 13$	2
11	BHR450RM01 100104662	Oil Seal 14×26×6	1
12	BHR450RM01 100102977	Pipe Assy	1
13	BHR450RM01 100103122	Back Part L.Crankcase Cover	1
14	BHR450RM01 100011536-0002	Bolt, M6×30	2



RIGHT CRANKCASE COVER

CLUTCH ASSY

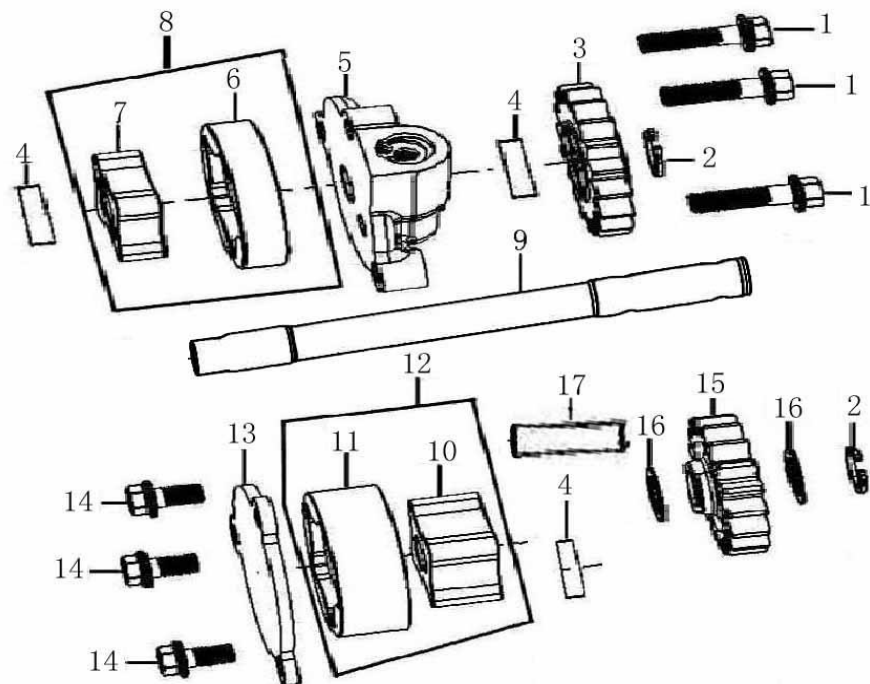
N°	PART CODE	DESCRIPTION	Qté
1	BHR450RM01 100106487	Washer, $\phi 25 \times 1.8 \times \phi 36$	1
2	BHR450RM01 100101018	Needle BeaRing, (K25 \times 29 \times 13)	1
3	BHR450RM01 100101254	Needle BeaRing, (K25 \times 29 \times 13)	1
4	BHR450RM01 100107925	Out Case Assembly Clutch	1
5	BHR450RM01 100107885	Washer	1
6	BHR450RM01 100107895	Center Sleeve Clutch	1
7	BHR450RM01 100059394	Stop Washer, Clutch	1
8	BHR450RM01 100059392	Nut M18	1
9	BHR450RM01 100203053	Drive Friction Disk	8
10	BHR450RM01 100107972	Outer Friction Disk A	7
11	BHR450RM01 100103437	Pushing Rod Clutch	1
12	BHR450RM01 100107977	Rod Clutch Push	6
13	BHR450RM01 100101204	BeaRing, (Axk1528)	1
14	BHR450RM01 100106415	Washer, $\phi 15 \times 1 \times \phi 28$	1
15	BHR450RM01 100103395	SpRing, Clutch	6
16	BHR450RM01 100103378	Pressure Plate Clutch	1
17	BHR450RM01 100202986	Clutch Disengage SpRing, Seat	6
18	BHR450RM01 100033034-0001	Bolt, M6 \times 30	6
19	BHR450RM01 100103326	Clutch Assy	1



CLUTCH ASSY

OIL PUMP

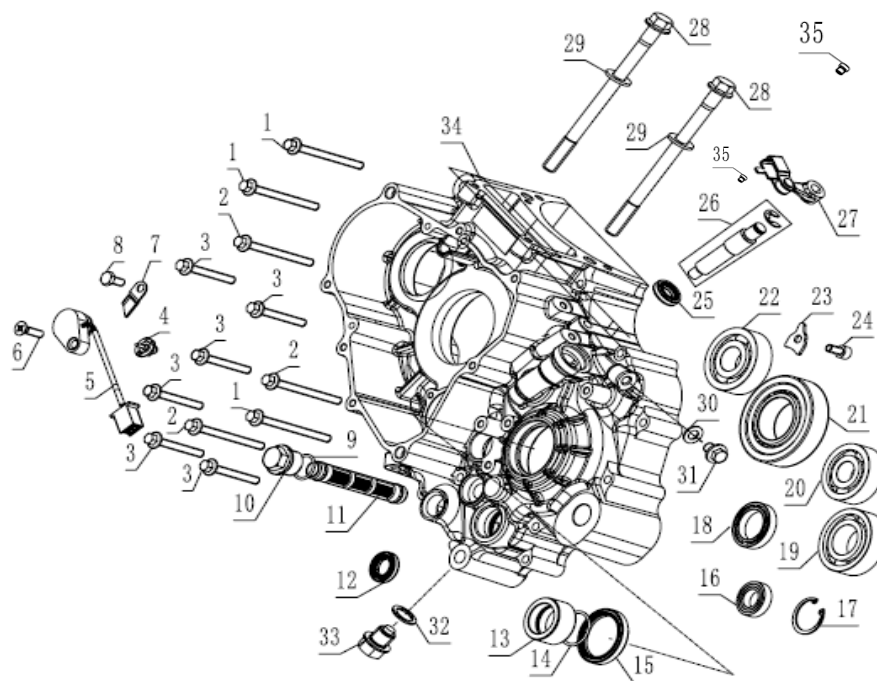
N°	PART CODE	DESCRIPTION	Qté
1	BHR450RM01 100011521-0001	Bolt, M5×18	3
2	BHR450RM01 100011094	Retaining Ring, 10	2
3	BHR450RM01 100083712	Oil Pump Gear Ass.	1
4	BHR450RM01 100100903	Pin, $\phi 4 \times 15.8$	3
5	BHR450RM01 100100168	Oil Pump Cover	1
6	BHR450RM01 100100207	Outer Rotor Oil Pump	1
7	BHR450RM01 100100196	Inner Rotor Oil Pump	1
8	BHR450RM01 100100215	Oil Pump Rotor	1
9	BHR450RM01 100100157	Shaft Oil Pump	1
10	BHR450RM01 100100197	Inner Rotor Oil Pump	1
11	BHR450RM01 100100208	Outer Rotor Oil Pump	1
12	BHR450RM01 100100216	Oil Pump Rotor	1
13	BHR450RM01 100100167	Oil Pump Cover	1
14	BHR450RM01 100011518-0001	Bolt, M5×12	3
15	BHR450RM01 100083711	Oil Pump Gear	1
16	BHR450RM01 100106390	Washer, $\phi 10.2 \times 0.5 \times \phi 15$	2
17	BHR450RM01 100100218	Oil Pump Gear Shaft	1



OIL PUMP

LEFT CRANKCASE

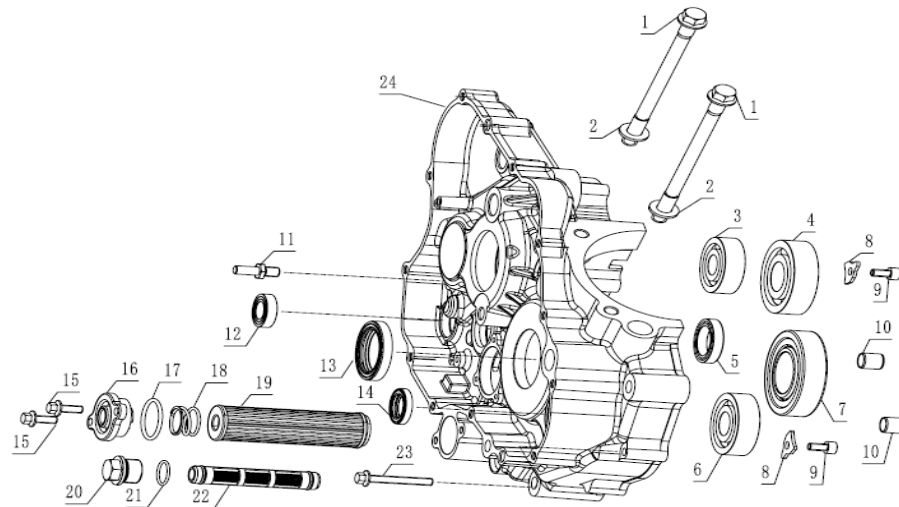
N°	PART CODE	DESCRIPTION	Qté
1	BHR450RM01 100071619-0001	Bolt, M6×70	3
2	BHR450RM01 100071434-0001	Bolt, M6×65	3
3	BHR450RM01 100033120-0001	Bolt, M6×45	6
4	BHR450RM01 100104487	Contact Cearindication	1
5	BHR450RM01 100104494-0001	Gearshift Switch Comp	1
6	BHR450RM01 100010979-0003	Screw, M6×20	1
7	BHR450RM01 100102900	Position Plate	1
8	BHR450RM01 100011171-0002	Bolt, M6×12	1
9	BHR450RM01 100107684	O-Ring,φ17.5×1.8	1
10	BHR450RM01 100104918-0001	Cover Oil Filter Screen	1
11	BHR450RM01 100060838	Strainer Oil Filter	1
12	BHR450RM01 100104830	Oil Seal 15×25×5	1
13	BHR450RM01 100103518	Bush	1
14	BHR450RM01 100107725	O-Ring,φ25×2	1
15	BHR450RM01 100104814	Oil Seal 35×45×6	1
16	BHR450RM01 100010771	Bearing, 61902	1
17	BHR450RM01 100011078	Retaining Ring, 28	1
18	BHR450RM01 100100927	Bearing, 61902	1
19	BHR450RM01 100100932	BeaRing,(Nj205)	1
20	BHR450RM01 100300748	Bearing, 6303	1
21	BHR450RM01 100070092	BeaRing,(Nj207)	1
22	BHR450RM01 100100999	BeaRing,6304	1
23	BHR450RM01 100068013	Baffle	1
24	BHR450RM01 100010836-0006	Bolt, M6×12	1
25	BHR450RM01 100104747	Oil Seal 14×22×5	1
26	BHR450RM01 100054535-0001	Clutch Separating Rod	1
27	BHR450RM01 100106275-0002	Rocker Arm Release Lever Clutch	1
28	BHR450RM01 100100282	Cylinder Stud Bolt A	2
29	BHR450RM01 100106393	Washer,φ10.5×2×φ20	2
30	BHR450RM01 100106575	Washer,φ8.5×1.2×φ15	1
31	BHR450RM01 100032843-0004	Bolt, M8×12	1
32	BHR450RM01 100106556	Washer,φ16.5×2×φ23	1
33	BHR450RM01 100050705-0002	Drain Bolt	1
34	BHR450RM01 100069936-0002	Left Crankcase Block	1
35	BHR450RM01 100100726	Oil Nozzle	1



LEFT CRANKCASE

RIGHT CRANKCASE

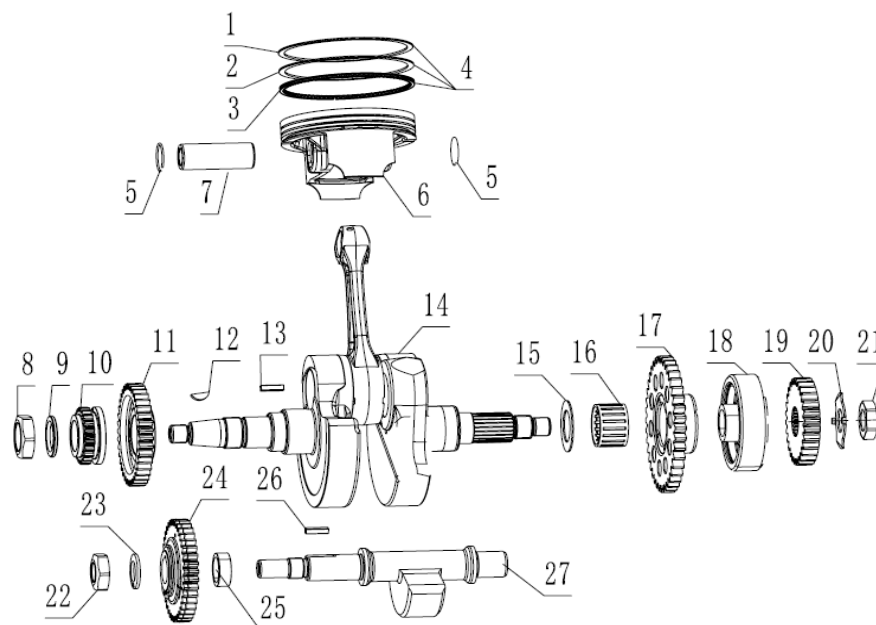
N°	PART CODE	DESCRIPTION	Qté
1	BHR450RM01 100100282	Cylinder Stud Bolt A	2
2	BHR450RM01 100106393	Washer, $\phi 10.5 \times 2 \times \phi 20$	2
3	BHR450RM01 100300748	BeaRing, (6303RS_C3)	1
4	BHR450RM01 100101252	BeaRing, (6305_P5)	1
5	BHR450RM01 100100927	BeaRing, (61805)	1
6	BHR450RM01 100100999	BeaRing, (6304)	1
7	BHR450RM01 100070092	BeaRing, (NJ207EM_C3)	1
8	BHR450RM01 100068013	Baffle	2
9	BHR450RM01 100010836-0006	Bolt, M6×10	2
10	BHR450RM01 100108525	Dowel Pin, $\phi 13 \times \phi 14$	2
11	BHR450RM01 100100398	Bolt Return Springn Fixing	1
12	BHR450RM01 100010771	Bearing, 61902	1
13	BHR450RM01 100104689	Oil Seal 35×50×7	1
14	BHR450RM01 100062066	Oil Seal 20×30×5	1
15	BHR450RM01 100055589-0006	Bolt, M6×16	2
16	BHR450RM01 100063279-0003	Cap Oil Filter	1
17	BHR450RM01 100107754	O-Ring, $\phi 30 \times 2.6$	1
18	BHR450RM01 100100017	SpRing, Oil Fine Filter	1
19	BHR450RM01 100104863	Oil Filter	1
20	BHR450RM01 100104918-0001	Cover Oil Filter Screen	1
21	BHR450RM01 100107684	O-Ring, $\phi 17.5 \times 1.8$	1
22	BHR450RM01 100060838	Strainer Oil Filter	1
23	BHR450RM01 100033118-0007	Bolt, M6×40	1
24	BHR450RM01 100069938-0002	Right Crankcase Block	1



RIGHT CRANKCASE

CRANKSHAFT CONNECTING-ROD ASSY/PISTON

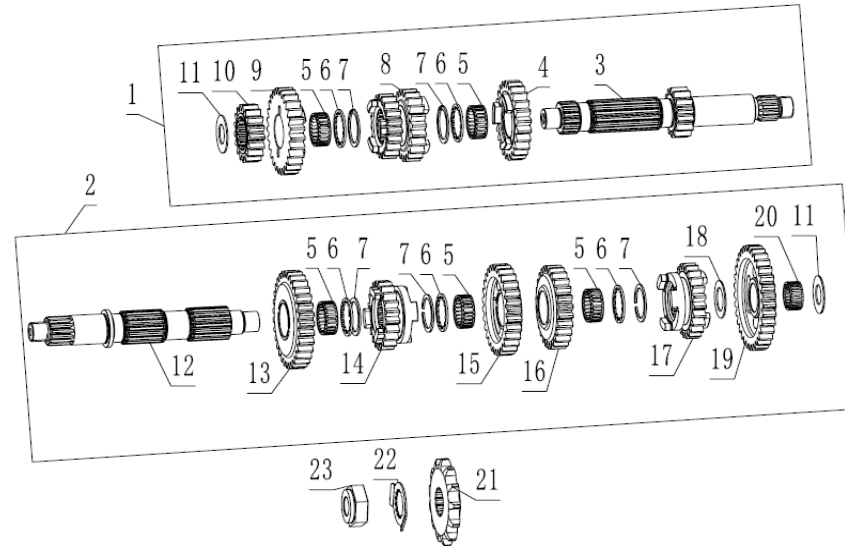
N°	PART CODE	DESCRIPTION	Qté
1	BHR450RM01 100079025	Piston Ring,1	1
2	BHR450RM01 100107488	Piston Ring,2	1
3	BHR450RM01 100079024	Oil Ring,Assy	1
4	BHR450RM01 100069455	Piston Ring,Comp	1
5	BHR450RM01 100050301	Check Ring Piston Pin	2
6	BHR450RM01 100069235	Piston	1
7	BHR450RM01 100101545	Pin,Piston	1
8	BHR450RM01 100059393	Nut M24	1
9	BHR450RM01 100106369	Washer,φ24.2×2.5×φ32	1
10	BHR450RM01 100070382	Hub Dump Chain Sprocket	1
11	BHR450RM01 100120900	Driving Gear	1
12	BHR450RM01 100100650	Semicircular Key	1
13	BHR450RM01 100100661	Tabulate Key	1
14	BHR450RM01 100076935	Crankshaft Connecting-Rod Assy	1
15	BHR450RM01 100095893	Washer,φ25×2×φ40	1
16	BHR450RM01 100101022	Needle BeaRing,(K29×33×20)	1
17	BHR450RM01 100086987	Plate Gear Assy	1
18	BHR450RM01 100086989	Assembly Overrunning Clutch	1
19	BHR450RM01 100120901	Primary Drive Gear	1
20	BHR450RM01 100059394	Stop Washer	1
21	BHR450RM01 100059392	Nut M18	1
22	BHR450RM01 100059391	Lock Nut,Clutch	1
23	BHR450RM01 100103345	Dish Washer,Clutch	1
24	BHR450RM01 100120899	Driven Gear Ass.	1
25	BHR450RM01 100103573	Crankshaft Tube	1
26	BHR450RM01 100100661	Tabulate Key	1
27	BHR450RM01 100087509	Balance Shaft	1



CRANKSHAFT CONNECTING-ROD ASSY/PISTON

TRANSMISSION MAIN,COUNTER SHAFT

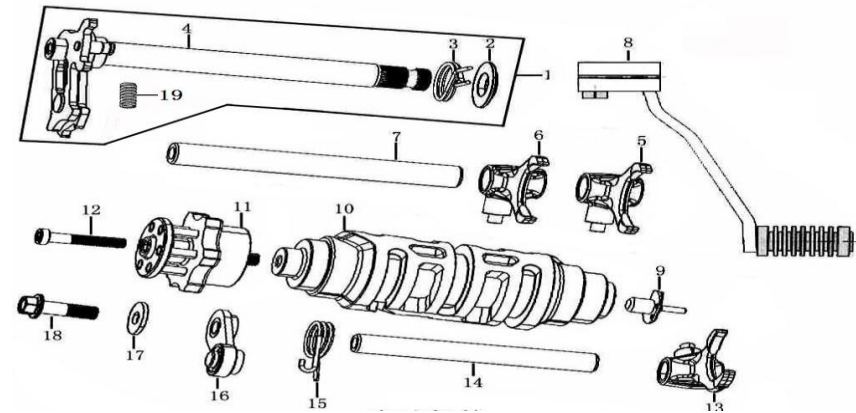
N°	PART CODE	DESCRIPTION	Qté
1	BHR450RM01 100106697	Main Shaft Transmission	1
2	BHR450RM01 100106790	Coutershaft Transmission	1
3	BHR450RM01 100106702	Transmission Main Shaft	1
4	BHR450RM01 100106753	Gear M-5	1
5	BHR450RM01 100078562	Needle BeaRing,(KS24×28×10)	5
6	BHR450RM01 100106764	Washer	5
7	BHR450RM01 100106772	Circlip	5
8	BHR450RM01 100106755	Washer,φ20.2×1×φ28	1
9	BHR450RM01 100106754	Gear M-6	1
10	BHR450RM01 100106752	Gear M-2	1
11	BHR450RM01 100106441	Washer,φ17.1×1×φ32	2
12	BHR450RM01 100106795	Transmission Main Shaft	2
13	BHR450RM01 100106872	Gear C-2	1
14	BHR450RM01 100106876	Gear C-6	1
15	BHR450RM01 100106873	Gear C-3	1
16	BHR450RM01 100106874	Gear C-4	1
17	BHR450RM01 100106875	Gear C-5	1
18	BHR450RM01 100106467	Washer,φ20.1×1×φ30	1
19	BHR450RM01 100106871	Gear C-1	1
20	BHR450RM01 100101013	Needle BeaRing,(K20×24×10)	1
21	BHR450RM01 100103847	Drive Sprocket	1
22	BHR450RM01 100067277	Stop Washer	1
23	BHR450RM01 100058085	Nut	1
24	BHR450RM01 100103562	Transmission Main Counter Shaft	1



TRANSMISSION MAIN,COUNTER SHAFT

GEARSHIFT MECHANISM

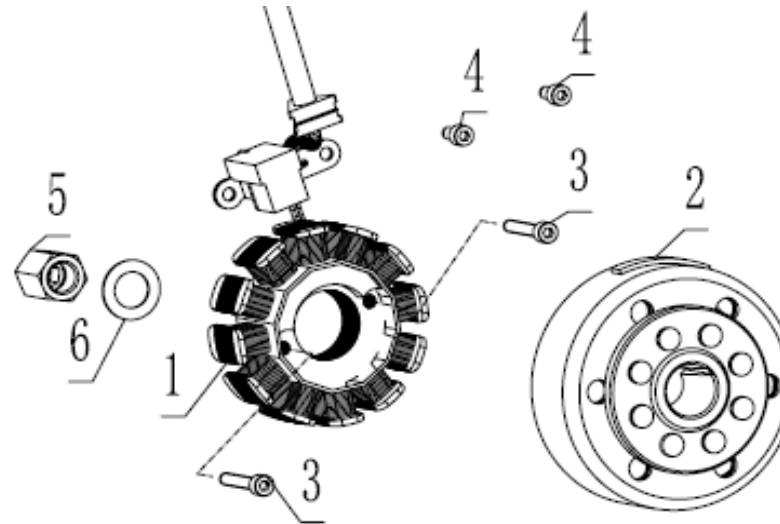
N°	PART CODE	DESCRIPTION	Qté
1	BHR450RM01 100103964	Gearshift Lever Comp	1
2	BHR450RM01 100104001	Axle Sleeve	1
3	BHR450RM01 100103973	Return Spring	1
4	BHR450RM01 100203923	Gearshift Shaft Comp	1
5	BHR450RM01 100103901	Left Fork Countershaft	1
6	BHR450RM01 100103897	Right Fork Countershaft	1
7	BHR450RM01 100103929	Guide Pin,Selector Fork Center	1
8	BHR450RM01 100203972	Gearshift Shaft	1
9	BHR450RM01 100104487	Contact Cearindication	1
10	BHR450RM01 100103939	Gearshift Drum Comp	1
11	BHR450RM01 100103945	Stopping Plate	1
12	BHR450RM01 100011537-0002	Bolt, M6×35	1
13	BHR450RM01 100103907	Center Fork Mainshaft	1
14	BHR450RM01 100103921	Shaft Gearshift Fork	1
15	BHR450RM01 100103988	SpRing, Locating Plate	1
16	BHR450RM01 100104010	Locating Plate Assy	1
17	BHR450RM01 100106379	Washer,φ6.5×1.5×φ18	1
18	BHR450RM01 100055588-0006	Bolt, M6×20	1
19	BHR450RM01 100103979	SpRing,Gearshift Plate	1



GEARSHIFT MECHANISM

MAGNETO COMP

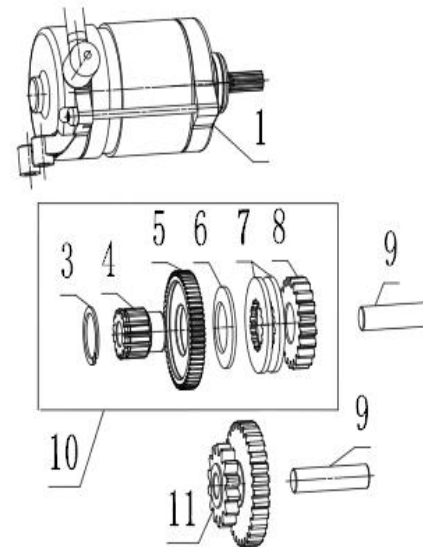
N°	PART CODE	DESCRIPTION	Qté
1	BHR450RM01 100104177-0002	Stator Assy Magneto	1
2	BHR450RM01 100104203	Rotor Assy Magneto	1
3	BHR450RM01 100010834-0001	Bolt, M5×30	2
4	BHR450RM01 100010831-0001	Bolt, M5×10	2
5	BHR450RM01 100100548	Nut M14×1.5	1
6	BHR450RM01 100106421	Washer, $\phi 15.2 \times 1.5 \times \phi 25$	1



MAGNETO COMP

ELECTRIC STARTING MECHANISM

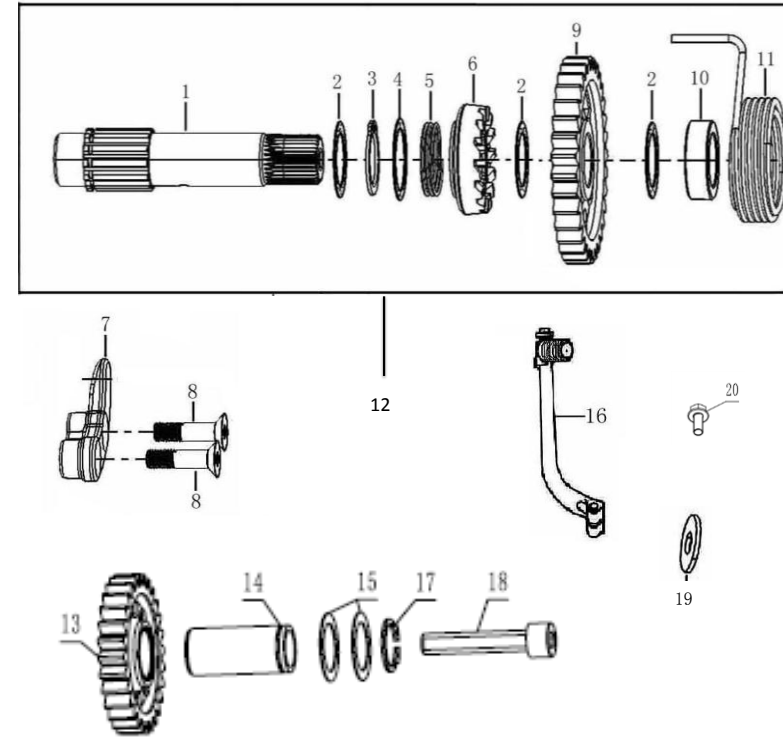
N°	PART CODE	DESCRIPTION	Qté
1	BHR450RM01 100083405-0002	Starting Motor Assy	1
2	BHR450RM01 100011534-0002	Bolt, M6×25	2
3	BHR450RM01 100103659	Circlip	1
4	BHR450RM01 100060121	Reduction Shaft Sleeve	1
5	BHR450RM01 100088950	Twin Gear Set	1
6	BHR450RM01 100102774	Dish Washer,φ25.5×2×φ41	1
7	BHR450RM01 100202717	From The Kinetic Friction Slices	2
8	BHR450RM01 100060851	Reduction Shaft Sleeve	1
9	BHR450RM01 100062750	Shaft Reduction	2
10	BHR450RM01 100083794	Gear Reduction 1	1
11	BHR450RM01 100060120	Gear,Reduction,2(2#)	1



ELECTRIC STARTING MECHANI

KICK STARTING SHAFT ASSEMBLY

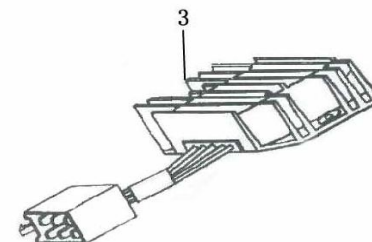
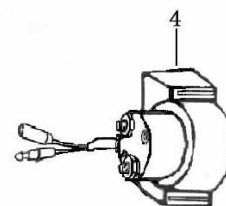
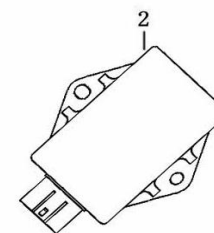
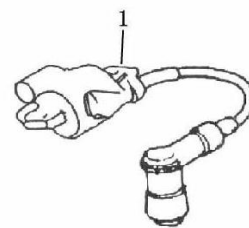
N°	PART CODE	DESCRIPTION	Qté
1	BHR450RM01 100105757	Pivot Kick Starting Shaft	1
2	BHR450RM01 100106458	Washer, $\phi 18.5 \times 0.5 \times \phi 26$	3
3	BHR450RM01 100011103	Retaining Ring, 21	1
4	BHR450RM01 100106480	Washer, $\phi 21.7 \times 0.5 \times \phi 29.5$	1
5	BHR450RM01 100105789	SpRing, Kick Starting Ratchet Wheel	1
6	BHR450RM01 100105785	Starting Ratchet	1
7	BHR450RM01 100105792	Guide Plate	1
8	BHR450RM01 100031831-0002	Screw, M6x25	2
9	BHR450RM01 100108204	Gear Kick Starter	1
10	BHR450RM01 100105741	Seat SpRing, Kick Starting Shaft	1
11	BHR450RM01 100108209	Return SpRing, Kick Starting Shaft	1
12	BHR450RM01 100105720	Kick Starting Shaft Assembly	1
13	BHR450RM01 100103785	Gear	1
14	BHR450RM01 100103777	Collar	1
15	BHR450RM01 100106458	Washer, $\phi 18.5 \times 0.5 \times \phi 26$	2
16	BHR450RM01 100303463	Start-Up Bar Comp	1
17	BHR450RM01 100011100	Retaining Ring, 18	1
18	BHR450RM01 100031794-0003	Bolt, M8x40	1
19	BHR450RM01 100106607	Washer, $\phi 8.5 \times 3 \times \phi 23$	1
20	BHR450RM01 100011313-0004	Bolt, M8x20	1



KICK STARTING SHAFT ASSEMBLY

ELECTRIC

N°	PART CODE	DESCRIPTION	Qté
1	BHR450RM01 100204302-0001	Ignition Coil	1
2	BHR450RM01 100204369	C.D.I	1
3	BHR450RM01 100205443	Rectifier	1
4	BHR450RM01 100205381	Relay	1



ELECTRIC